

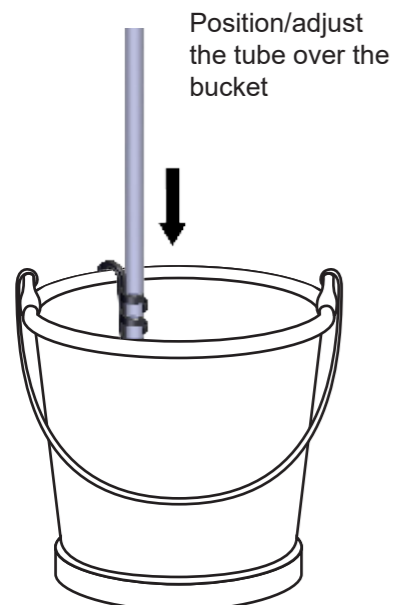
Prepare

Low flow (bottle)



Place bottle on drip tray with the outlet tube positioned inside the bottle. To prevent foaming, there should be limited space between the bottom of the bottle and the outlet tube

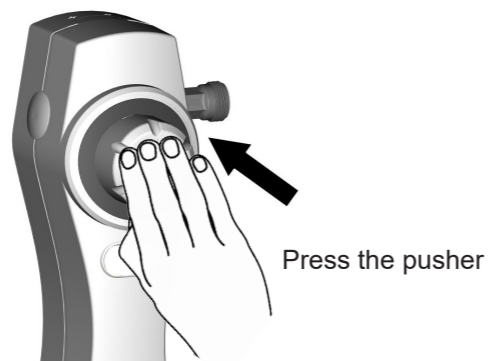
High flow



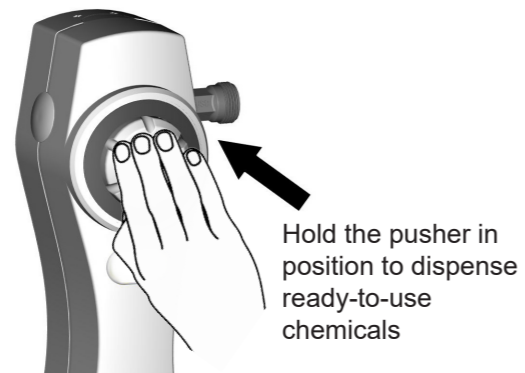
Operate



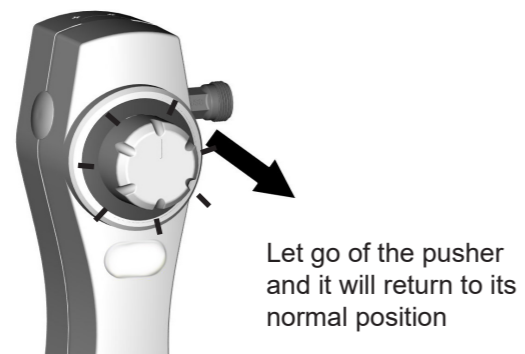
Turn the dial to select desired chemical. A click sound **CLICK** will assure you that the dial has been set correctly



Press the pusher



Hold the pusher in position to dispense ready-to-use chemicals

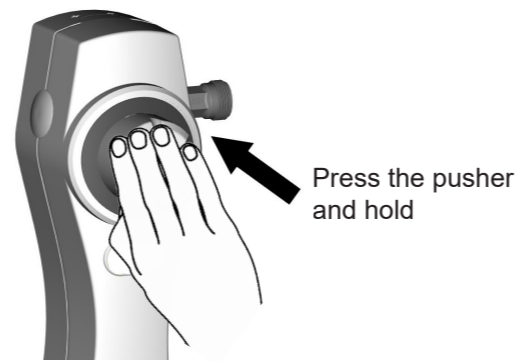


Let go of the pusher and it will return to its normal position

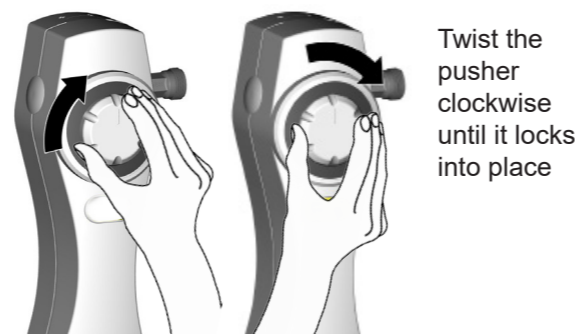
Auto-lock dispense

The auto-lock feature allows you to continuously dispense ready-to-use chemicals into a bucket or scrubber dryer, without having to hold the pusher.

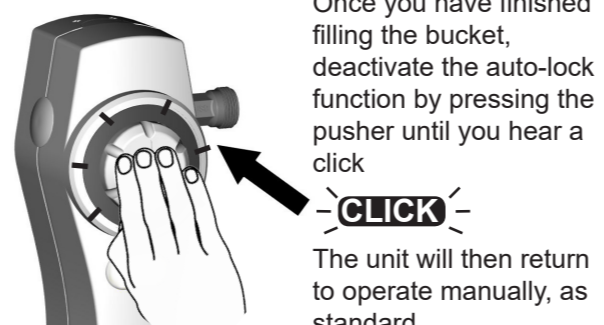
This function will only work if it has been activated by a supervisor.



Press the pusher and hold



Twist the pusher clockwise until it locks into place

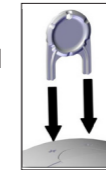


Once you have finished filling the bucket, deactivate the auto-lock function by pressing the pusher until you hear a click

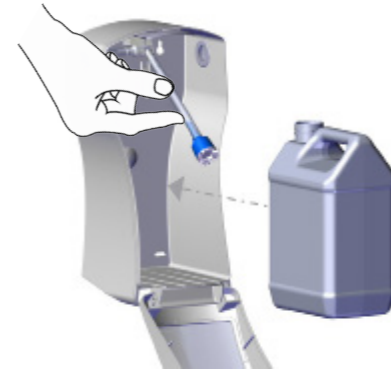
CLICK
The unit will then return to operate manually, as standard

Refill/change consumables

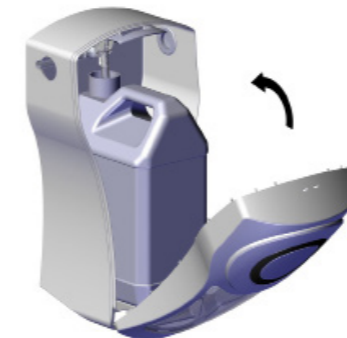
Cabinets must be unlocked using the cabinet key



Jerry Can

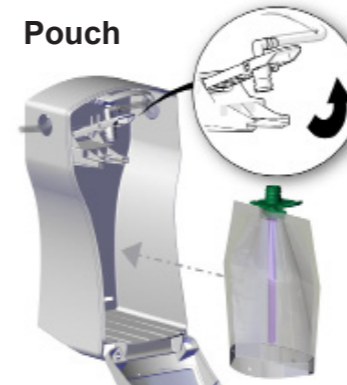


Unlock the cabinet and remove the empty jerry can. Lift the chemical suction tube and insert the tube inside the new jerry can

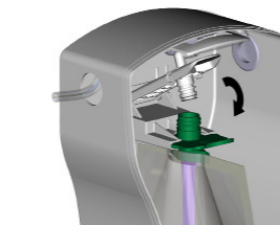


For health & safety purposes, close the cabinet lid once the jerry can is in place

Pouch



Unlock the cabinet and remove the empty pouch. Lift the pouch lever and insert the new chemical pouch



Once the chemical pouch is in position, push down pouch lever to secure the chemical flow

WARNING:
FOLLOW SAFETY CHEMICAL HANDLING INSTRUCTIONS OF CHEMICAL MANUFACTURERS.
WEAR SUITABLE PERSONAL PROTECTIVE EQUIPMENT WHEN DISPENSING CHEMICALS.